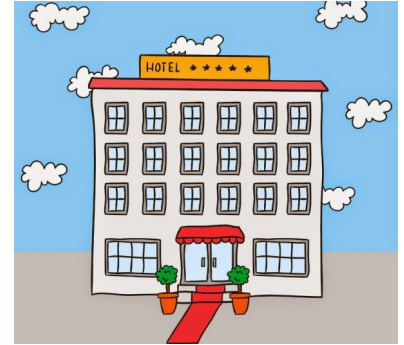


Sydney Renaldo is a senior in high school. Before school started in August, she applied for a part-time job as a banquet server for a hotel and was hired. She began work on Thursday, August 20th.



Normally, she works six hours a day on Friday and Saturday from 4PM to 10PM, but those hours can sometimes change based on the events booked in the hotel's ballroom space.

She is paid twice a month on the 15th and on the last day of the month. Shown below is her first paycheck for the pay period from Monday, August 17th through Sunday, August 30th. Use the following directions to complete her first paycheck.

- Amount Multiply her hourly rate by the number of hours she worked.
- YTD Hours YTD Hours equals her current Hours.
- YTD Amount YTD Amount equals her current Amount.
- Gross Pay Both her Gross Pay Amount and Gross Pay YTD Amount are equal to her current Amount and YTD Amount.
- Federal W/H Sydney was told that since she would not make enough to pay federal income tax she could complete a W4E form and not have federal withholding taken off her paycheck.
- Soc Sec 6.2% of her gross pay is withheld for social security. Her YTD Amount is the same.
- Medicare 1.45% of her gross pay is withheld for medicare. Her YTD Amount is the same.
- TX W/H Tax 0.0% of her gross pay is withheld for Texas State Income Tax. Her YTD Amount is the same.
- Deductions Add her total deductions. Her YTD Amount is the same.
- Net Pay Subtract her total Deductions from her Gross Pay. Her YTD Amount is the same.

Bilton Hotel		EIN 38-2924596		45685	
		ID BW400131		Leave	Accrued
				Used	Available
Sydney Renaldo					
Marital Status: Single		Period For: 08/17/2015		To: 08/30/2015	
Earnings	Rate	Hours	Amount	YTD Hours	YTD Amount
YD Hour	9.35	24.00	_____	_____	_____
				Deductions	Amount
				Fed W/H	0.00
				Soc Sec	_____
				Medicare	_____
				TX W/H Tax	0.00
				Deductions	YTD Amount
			Gross Pay	_____	_____
				Net Pay	_____

Name:

Period: